

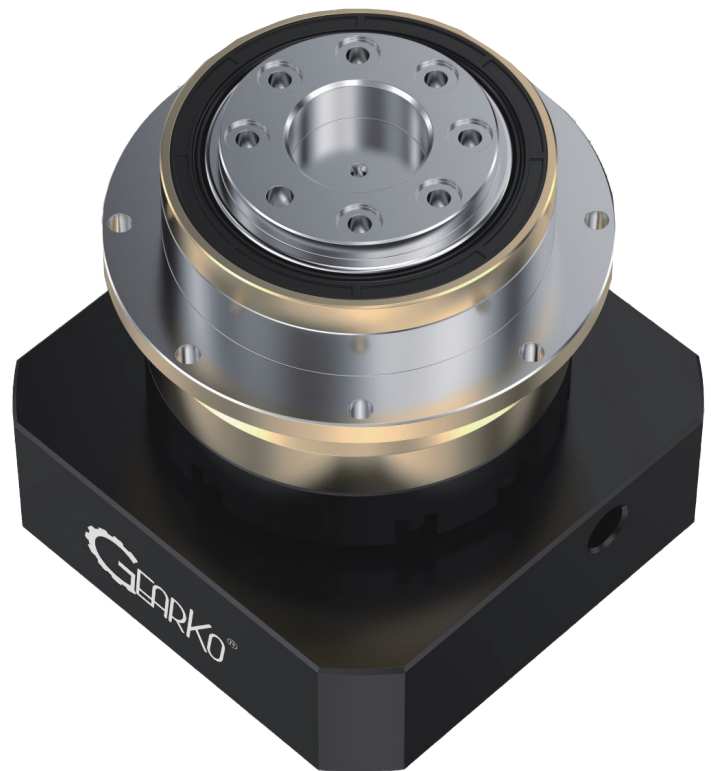


**HIGH-PRECISION PLANETARY GEARBOXES**

# **THA Series**

**INTEGRATED SOLUTIONS**

---



OEM Solutions for the Toughest Industrial Applications — Standard, Modified or Customized



			THA090												THA110											
			One Stage				Two Stage								One Stage				Two Stage							
Speed Ratio	i		4	5	7	10	20	25	35	40	50	70	100	4	5	7	10	20	25	35	40	50	70	100		
Norminal Output Torque	T <sub>1</sub>	Nm	135	160	140	105	135	160	140	125	160	140	105	295	335	310	240	295	335	310	270	335	310	240		
Emergency Stop Torque	T <sub>2</sub>	Nm	T <sub>1</sub> ×3				T <sub>1</sub> ×3								T <sub>1</sub> ×3				T <sub>1</sub> ×3							
Norminal Input Speed	S <sub>1</sub>	rpm	3700				4500								3700				4500							
Maximum Input Speed	S <sub>2</sub>	rpm	6000				7000								6000				7000							
Maximum Output Torque	T <sub>4</sub>	Nm	T <sub>1</sub> ×3×60%				T <sub>1</sub> ×3×60%								T <sub>1</sub> ×3×60%				T <sub>1</sub> ×3×60%							
Maximum Bending Moment	M <sub>a</sub>	Nm	280				280								480				480							
Maximum Axial Force	F <sub>b</sub>	N	3700				3700								5800				5800							
Torsional Rigidity	—	Nm/arcmin	40				40								92				92							
Efficiency	η	%	≥97				≥94								≥97				≥94							
Service Life	—	h	30000				30000								30000				30000							
Noise	—	dB	≤59				≤59								≤60				≤60							
Weight	—	kg	4.8				4.5								7				9							
Backlash	—	arcmin	≤3				≤3								≤3				≤3							
Operating Temperature	—	℃	-20~90																							
Lubrication	—		Synthetic Grease																							
Protection Class	—		IP65																							
Mounting Position	—		Any Direction																							
Moment of Inertia	J	kg.cm <sup>2</sup>	0.51	0.47	0.45	0.44	0.13								2.87	2.71	2.62	2.57	0.47				0.44			

#### Notes:

- ⚙ Speed ratio ( $i=S_1/S_{out}$ )
- ⚙ When the output speed is 100rpm, it acts on the center position of the output shaft.
- ⚙ Continuous operating life is 10,000 hours.
- ⚙ The noise value is based on the input speed 3000rpm,  $i=10$ .



www.gearkodrive.com

## State-of-the-Art Gear Manufacturing

GearKo high-precision planetary gearboxes and gear racks are built with world-class gear manufacturing capabilities, quality material suppliers, and state-of-the-art quality. ISO 9001 compliance in plant processes allows GearKo to offer the highest level of precision, durability and endurance of any planetary gearbox manufactured.

GearKo gearboxes have as little as less than 1 arc minute of backlash and the highest torque rating per frame size on the market.

### Going the Extra Mile

Demanding inspection criteria is critical to manufacturing products with our superior quality and performance.



## GearKo Network

### Taiwan

#### **GearKo Drive Technology (Taiwan) Limited**

9F-2, No. 163, Sec. 1, Wanshou Rd.,  
Guishan Dist., Taoyuan City 333027, Taiwan  
Phone: +886-02-8200-0620

### India

#### **Hiramani Tech Solution**

Rajas Enclave Building,  
Near Wondercity,  
Katraj, Pune, Maharashtra, 411046 India  
Phone: +91 91751 38866

### Spain

#### **SIT Automation Iberica SA**

Carrer d'Àlaba, 60, Sant Martí  
08005 Barcelona, Spain  
Phone: (+34) 933 00 03 57

### United States & Canada

#### **Integr-i-motion, LLC**

**Kevin McNicholas**  
195 N. Harbor Dr., #3308  
Chicago, IL USA 60601  
Phone: +1 440.725.4712

### Korea

#### **TERA FA.**

37-7, Techno 1-ro, Yuseong-gu,  
Daejeon, Republic of Korea  
Phone: +82-42-936-8122

### Switzerland

#### **Oxni GmbH**

Klosterstrasse 34,  
8406 Winterthur, Switzerland  
Phone: +41 52 551 00 40

### China

#### **GearKo Drive Technology Limite**

No. 188 Xinshun Road,  
Huishan District  
Wuxi China  
Phone: +86 139 2417 2450

### France

#### **IMO Jeambrun Automation SAS**

14 Rue DU Chauffour  
Za De La Broye  
59710 Ennevelin, France  
Phone: +33 (0)3 20 71 66 98

### Poland

#### **AMG – Zaopatrzenie**

**Przemysłu i Automatyka**  
ul. Legionów 47c, 82-300 Elbląg,  
Tel: +48 55 232 98 25